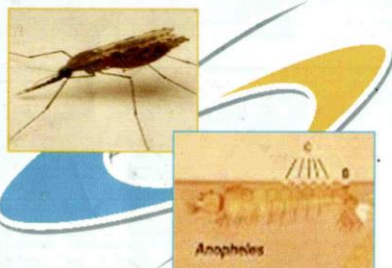




# Ministry of Health

National Institute of Health Research and Development  
Vector-Borne Diseases Research and Development Unit



JENDERAL A YANI STREET  
KM.7 KEMELAK BATURAJA 32111  
Telephone/Fax (0735) 322774  
[www.lokabaturaja.litbang.depkes.go.id](http://www.lokabaturaja.litbang.depkes.go.id)  
[lp4b2-bta@litbang.depkes.go.id](mailto:lp4b2-bta@litbang.depkes.go.id)

## INFORMATION

Through the ICDC (Intensified Communicable Disease Control) project (Asian development Bank Loan) in Baturaja district of Ogan komering Ulu, South Sumatera province, Vector-borne Disease Control Station (VBDCS) was founded in 1999. Since 2003 the unit became one of the important units in National Institute of Health Research and Development (NIHRD) and changing as Vector-borne Diseases Research and Development (VBDRD) Unit. The main objective of VBDRD Unit of Baturaja is to provide information about vector-borne disease (epidemiology) locally by conducting research and development activities.



## VISION

To be a center of excellence for research in vector-borne diseases.

## MISSION

- \* Conduct research and development in vector-borne diseases focus on malaria and lymphatic filariasis (LF).
- \* Disseminate research results to meet the users needs.
- \* Promote and develop partnerships across all partners (local/province/national).
- \* Increase the capabilities of researchers and other staff by following seminars, training, short course, etc. to strengthen institution capacity.

## ACTIVITIES AND RESEARCHS PROGRAM

- \* Conduct research and surveys on vector-borne diseases focus on malaria and Lymphatic Filariasis (LF).
- \* Develop a representative laboratory (Entomology and Parasitogy) to support research activities and also being a training and educational laboratory for medical students and health workers.
- \* Undertakes entomological investigations of outbreaks of vector-borne diseases (local and regional) and recommends appropriate vector control measures.





## RESEARCH ACTIVITIES

### Year 2010

- ♦ Bionomik Vector of Malaria based on topographic area in Jambi Province in 2010
- ♦ Public Participation In the Use of Permethrin Insecticide-treated Nets in Tanjung Agung Muara Enim Regency South Sumatra Province
- ♦ The Presence of Larvae in The Relationship with the DHF Case in School Children in South Sumatera Province
- ♦ Reference Collection of Malaria Parasitology and Entomology in the South Ogan Komering Ulu District and Filariasis in Banyuasin District

### Year 2011

- \* Epidemiology of filariasis in Pemayung district Batanghari Regency Jambi Province
- \* Study of Knowledge, Attitude and Behavior in the Treatment of Filariasis in Pemayung District Batanghari Regency Jambi Province
- \* History of Malaria During Phase Relationships Pregnancy with LBW Case
- \* Risk Factor of Filariasis Transmission Associated with Vector and Breeding Habitat in Karya Makmur Village Madang Suku III District East Ogan Komering Ulu Regency Year 2011
- \* Distribution of Spasial Malaria in Lengkiti District Ogan Komering Ulu Regency South Sumatera Province Year 2011

## FACILITIES

### Entomology laboratory

- \* Identify Mosquito specimen and **Aedes larvae, Anopheles, Mansonia and Culex**
- \* Conduct for vector susceptibility
- \* Rearing larvae and adult mosquito
- \* Insectarium
- \* Maintains live cultures of mosquitoes of medical importance for teaching and research purposes for scientific workers within and outside of the unit.
- \* Maintains a reference collection of preserved specimens of mosquitoes of medical importance to facilitate identification of the collected material.
- \* Maintains various kinds of mosquitoes larvae predators (fish culture). Provide entomology training facilities for health workers and medical students.



### Parasitology Laboratory

- \* Preparations of blood film for malaria parasites and filariasis diagnosis.
- \* Identification species of **Plasmodium spp** parasites and filarial worms.

## SUPPORTING FACILITIES IN INFRASTRUCTURES

- \* Training building, consist of three classrooms full AC with presentation facilities, infocus LCD, etc.
- \* Auditorium (capacity more than 100 people)
- \* Residence, consists of eleven rooms with a capacity of 10 beds, and the hall with capacity of 100 people.
- \* Collection with library books + 1000 books.



## EDUCATION AND TRAINING FUNCTIONS

